

# Choice Case Study

## Design for the Data Center for VITS Hotels

### Inside This Issue

Project Background	1
Project Challenge	1
Choice Role and Solution	2
About Choice Solutions	4

## Project Background

Kamat Hotels (India) Limited (KHIL) was lining up with several hotels across the country to serve national and international tourists and business-class people. Specifically, they were constructing different classes of hotels with different brand names: ORCHID, VITS, and LOTUS.

The case in point is VITS, a brand of KHIL under which a new hotel was being constructed in Mumbai. To provide world class facility to its customers, VITS wanted to build a total Datacenter. To meet the desired world-class standards, the group has recognized communication and IT infrastructure as a cornerstone.

VITS hotel identified Choice Solutions Ltd. as their IT Consultancy partner to design the solution. The team from Choice provided the entire solution and designed the total integration for VITS.

## Project Challenge

The data center that VITS was planning to build would include servers, WAN connectivity between the locations, LAN switching, data security, Voice Over IP, video conferencing and wireless solution for the guests. Choice Solutions Ltd. was given the task of providing the solution for,

- Passive Cabling
- Routers
- Data Security
- Managed Switches (L2 for VLANs and L3 for inter VLAN routing)
- Servers for critical data applications
- Bandwidth Requirement
- Video Conferencing
- Voice Solution
- Wireless solution for entire hotel

---

*The datacenter that VITS was planning to build would include servers, WAN connectivity, etc.*

---

## Choice Role and Solution

The Choice team for the VITS project implemented Passive Cabling with Cat6 structured cabling. The numbering of each port and I/O for proper identification was done to make the troubleshooting process an easy task. For future expansion the cabling was scalable for all gigabit ports. This was done to accommodate an increase in desktop numbers and for future bandwidth-hungry applications.

---

*The Choice team for the VITS project implemented Passive Cabling with Cat6 structured cabling.*

---

Two different internet service providers were getting terminated on a Unified Threat Management Device which would take care of the link load balancing of internet bandwidth. This had helped the client to secure their data from viruses, trojans, spywares, SPAM, etc at the gateway level itself. This helped the customer to block unwanted sites to their users per group-wise or user-wise depending on the requirement. This feature also helped the organization to save user productivity and hence also increased the overall productivity of the organization. It also provided the perfect reporting on user usage of bandwidth and sites. This increased the overall performance and security of the central data.

All the switches were replaced with SNMP-enabled with advanced QoS features. This has enhanced the performance of the complete network and made it easy to manage the network from a central location. All the 10/100 port data will flow to the central core switch through gigabit uplinks to avoid the data flow bottlenecks.

---

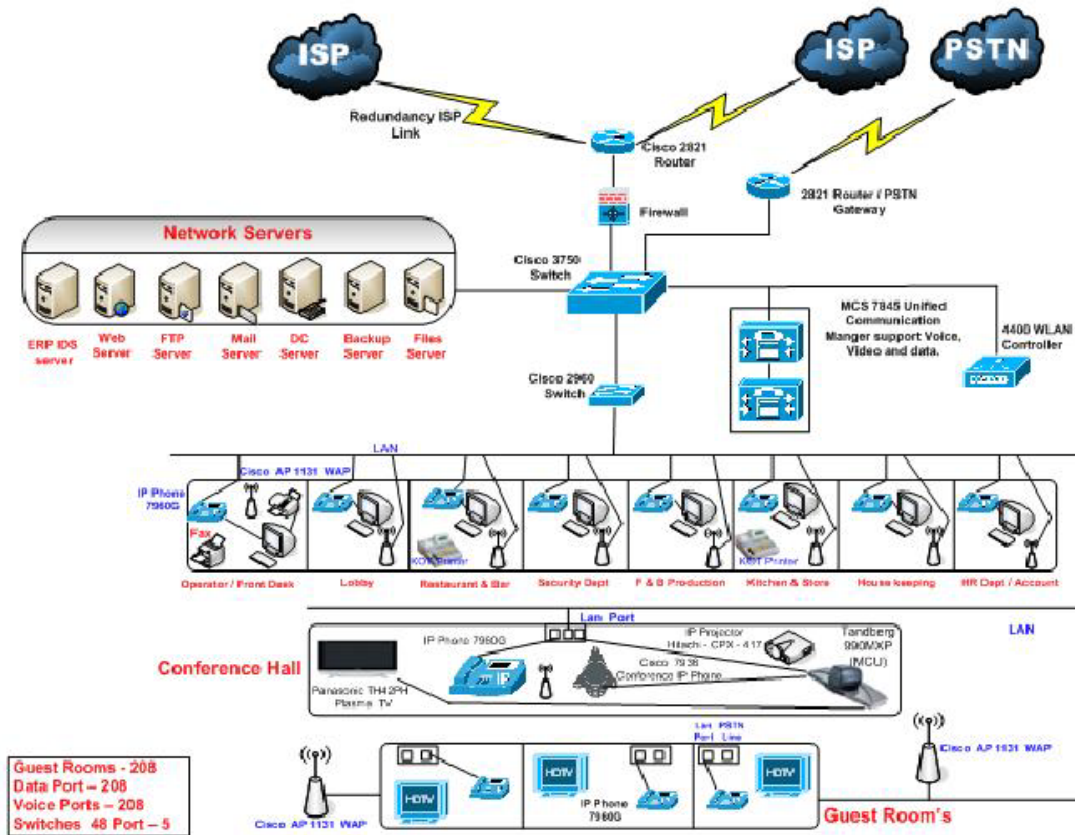
*The team also provided servers for their critical applications and data which increased the overall performance and security of central data.*

---

The team also provided servers for their critical applications and data which increased the overall performance and security of central data. Video conferencing equipment was designed and configured to enable video conferencing between the KHIL hotels as well as the voice solution to communicate within the hotel rooms for internal and external communication.

Next up was to provide secure wireless solutions for the entire range of VITS hotel; configured and designed to access wireless connectivity to all the rooms. This was done mainly for laptop connectivity. The team from Choice Solutions Ltd. understood the applications which VITS hotel is using and considered video and voice solutions and suggested the bandwidth according to the requirement.

### Network Architecture



Network Architecture by Choice

## About Choice Solutions

Established in 1991 Choice Solutions Ltd. is a leading IT and Facilities solutions provider. Choice Solutions Ltd. business comprises of Six different practices, namely

### IMS

- Desktop, Server, Network, Storage, Support, OS, Assets, Apps, Non IT
- Hardware - A-Add, M-Modify, I-Install, C-Change, R-Repair
- Assets, Security, Software Distribution, Upgrades

### Networking

- Packaged Services Monitoring & Management
- Products, Security, Design, Deploy, Maintain
- Auditing & Compliance, SOC

### Datacenter

- DC Audit, Monitor & Manage, Training
- Assess, Design, Built, Deploy, Disaster Recovery

### Consulting

- Business Consulting, CIO & Technology Services, Physical Security, Power Devices, IT Consulting
- DC Consulting, ERP, CRM & Custom Apps

### Cloud Computing

- Cold Site – Backup, Disaster Recovery
- Hot Site – HaaS, Software, Manage
- Public Cloud, Private Cloud, Hybrid Cloud
- CaaS, License Software, IaaS
- Disaster Recovery

### Power

- Power Audit, Equipment Management
- Physical Security, Power Devices
- Power Saving Devices
- Design & Audit
- Renewable Energy Products